

NILAN A/S
 Nilanvej 2
 DK-8722 Hedensted
 Tlf. +4576752500
 Fax +4576752525
<http://www.nilan.dk>
 Email: nilan@nilan.dk

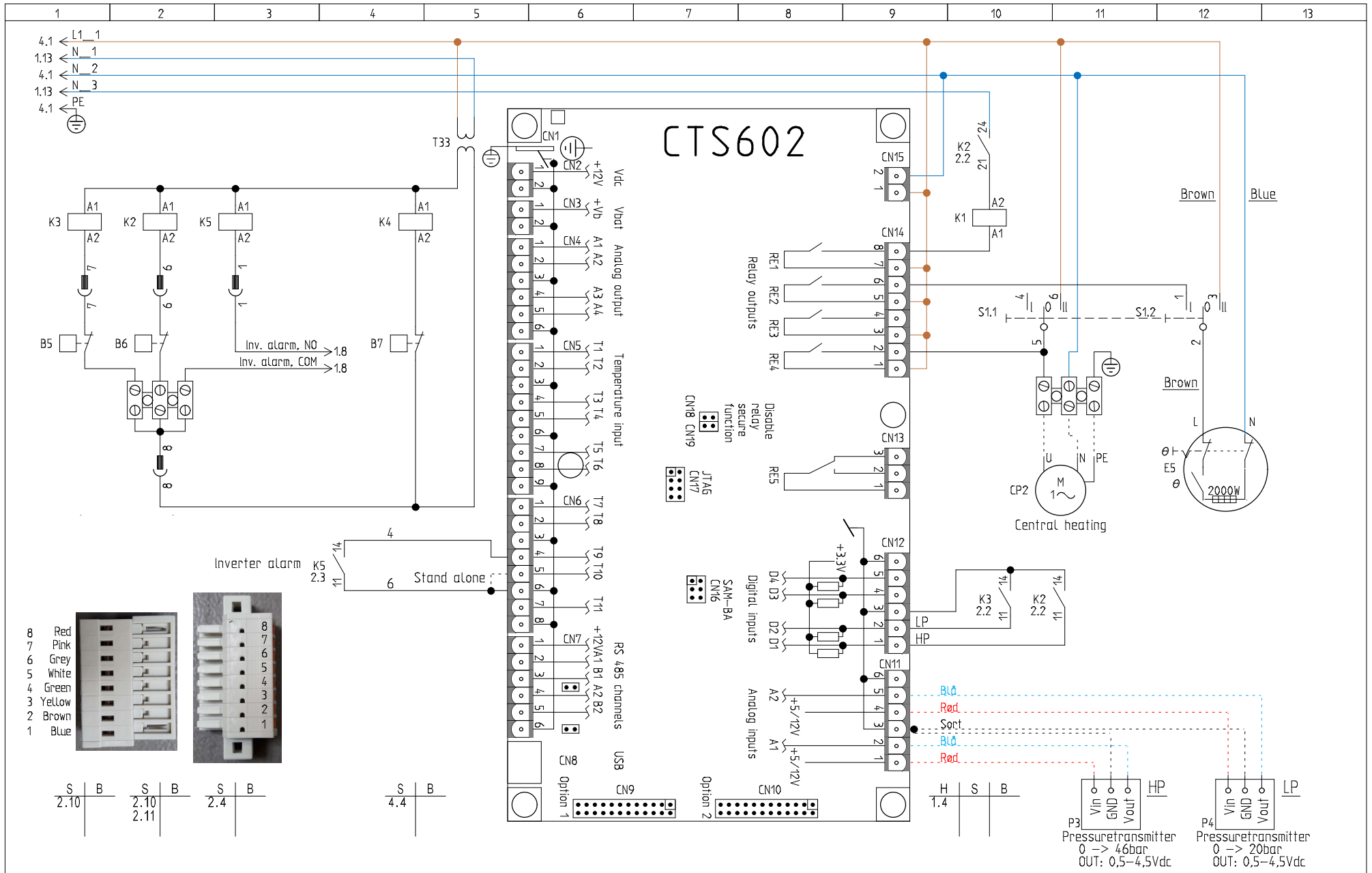
GEO3 / GEO6
 Jordvarmepumpe m/CTS602 Styring
 Partnr. 74002313 & XX, 74002613 & XX

Forsyning / Inverter

Ordernr.
 Date 09/05-2025

Revision 1.18
 Nationality GB

Initials MD
 Page 1

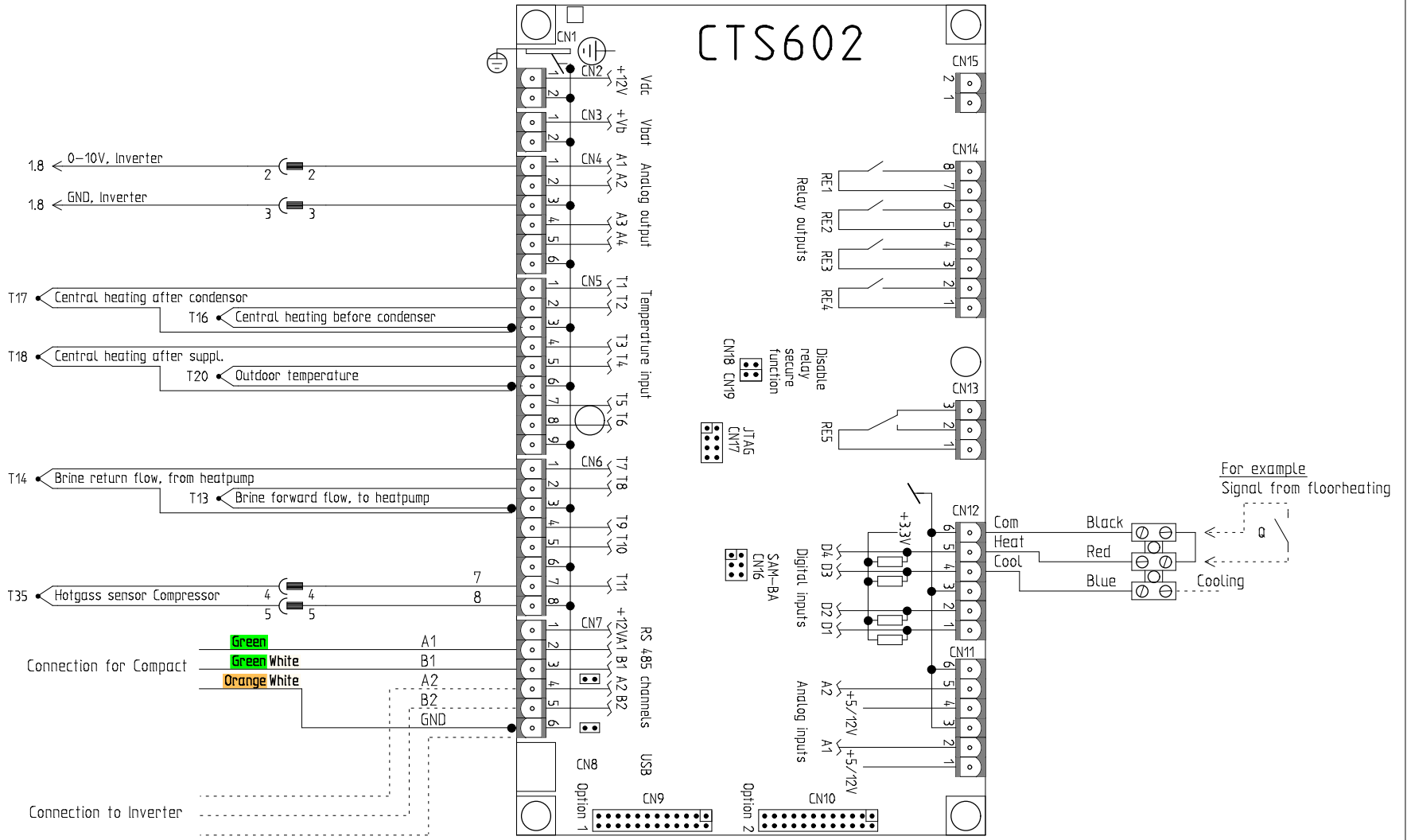


NILAN A/S
 Nilanvej 2
 DK-8722 Hedensted
 Tlf. +4576752500
 Fax +4576752525
<http://www.nilan.dk>
 Email: nilan@nilan.dk

GE03 / GE06
 Jordvarmepumpe m/CTS602 Styring
 Partnr. 74002313 & XX, 74002613 & XX

CTS602
 Controller

Ordernr.	Revision	Initials
Date	Nationality	Page
09/05-2025	1.18 GB	MD 2

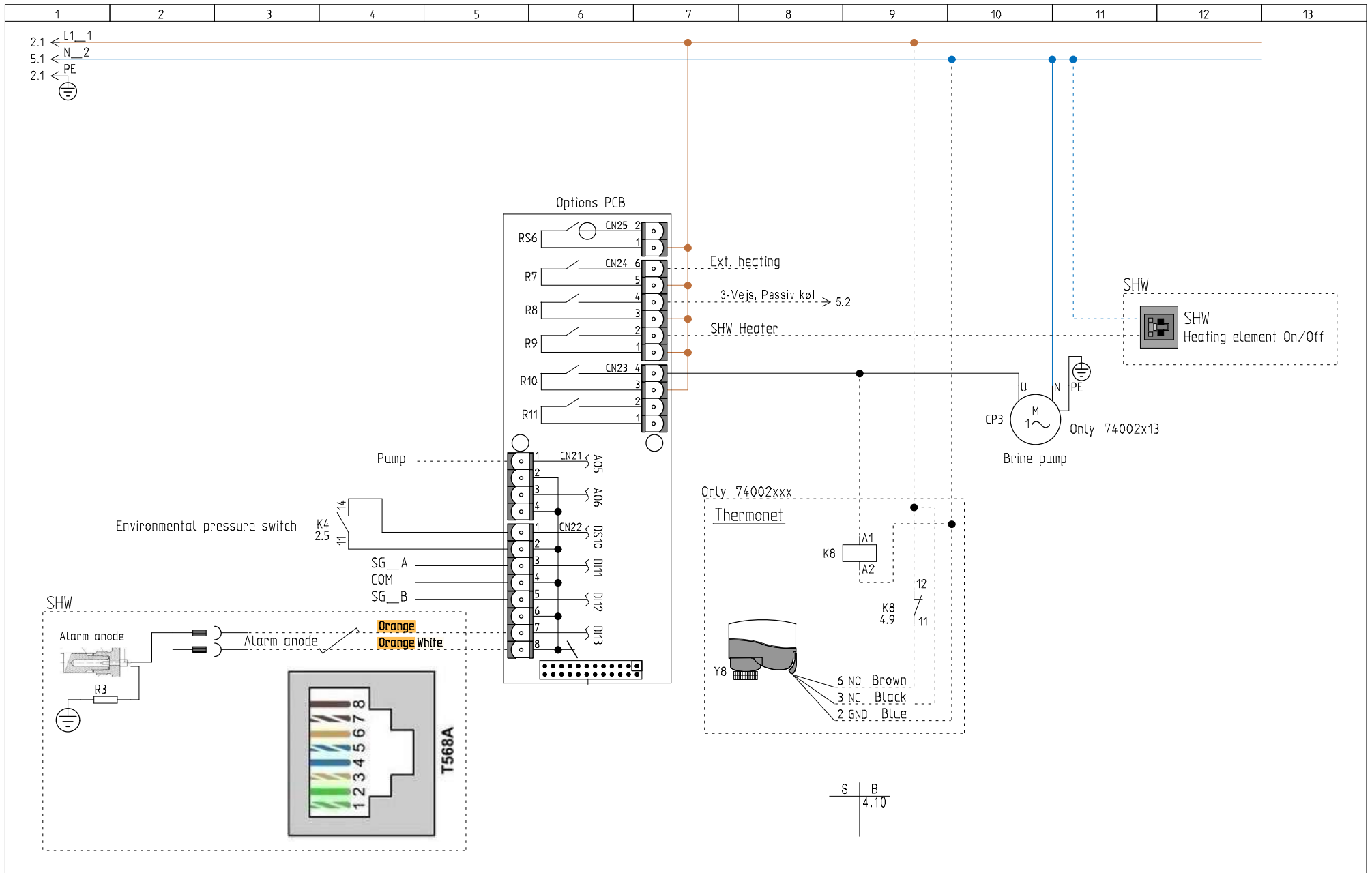


NILAN A/S
 Nilanvej 2
 DK-8722 Hedensted
 Tlf. +4576752500
 Fax +4576752525
<http://www.nilan.dk>
 Email: nilan@nilan.dk

GE03 / GE06
 Jordvarmepumpe m/CTS602 Styring
 Partnr. 74002313 & XX, 74002613 & XX

CTS602
 Følere

Ordernr.	Revision	Initials
Date	Nationality	Page
09/05-2025	1.18 GB	MD 3



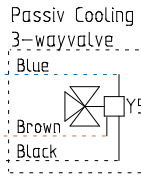
NILAN A/S
 Nilanvej 2
 DK-8722 Hedensted
 Tlf. +4576752500
 Fax +4576752525
<http://www.nilan.dk>
 Email: nilan@nilan.dk

GEO3 / GEO6
 Jordvarmepumpe m/CTS602 Styring
 Partnr. 74002313 & XX, 74002613 & XX

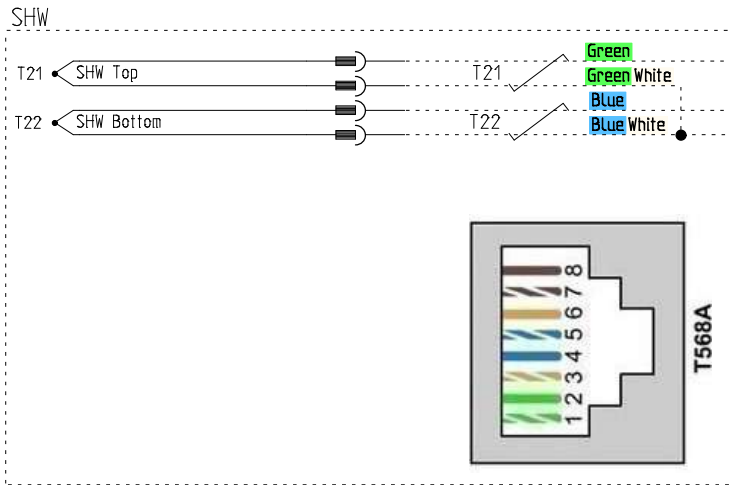
Optionsprint

Ordernr.	Revision	Initials
	1.18	MD
Date	Nationality	Page
09/05-2025	GB	4

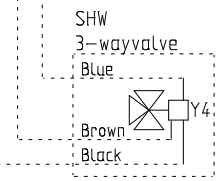
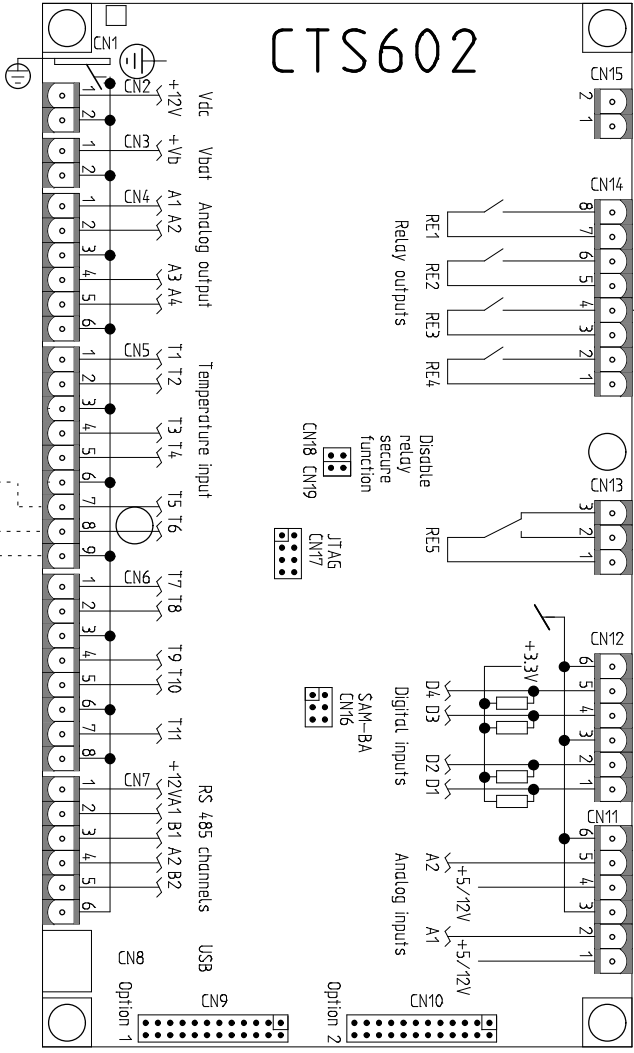
1.2 ← L_3V
4.1 ← N_2



4.9 ← 3-Vejs, Passiv køl



CTS602



NILAN A/S
 Nilanvej 2
 DK-8722 Hedensted
 Tlf. +4576752500
 Fax +4576752525
<http://www.nilan.dk>
 Email : nilan@nilan.dk

GE03 / GE06
 Jordvarmepumpe m/CTS602 Styring
 Partnr. 74002313 & XX, 74002613 & XX

Tilbehør

Ordernr.	Revision 1.18	Initials MD
Date 09/05-2025	Nationality GB	Page 5

List of Products

Product	Type	Description	Document type	Page	flow path
A1	Anode, #19203	Alarm anode	Circuit Diagrams IEC	4	1
B5	Danfoss A-CB R410A 3,4bar, #151150	Lowpressureswitch, Compressor	Circuit Diagrams IEC	2	2
B6	Danfoss A-CB R410A 42,0bar, #151100	Highpressureswitch Compressor	Circuit Diagrams IEC	2	2
B7	DWK 1,1/0,6 Bar, #15172	Environmental pressure switch	Circuit Diagrams IEC	2	5
CP2	Grundfos Alpha2 25-40/130 #36095	Circulation pump Central heating	Circuit Diagrams IEC	2	11
CP3	Grundfos UPM GEO 25-85/130, #36094	Brine pump	Circuit Diagrams IEC	4	11
E5	45C, #15411	Heating element. Security switch	Circuit Diagrams IEC	2	12
E5	45C, #15411	Heating element. Security switch	Circuit Diagrams IEC	2	12
Inv	Inverter, #1086	Inverter	Circuit Diagrams IEC	1	10
K1	Schneider LC1SK0600P7 230V~, #248121	Relay Compressor	Circuit Diagrams IEC	2	10
K2	Finder 2C/O 8A 24V, #234508	Relay, Highpressure	Circuit Diagrams IEC	2	2
K3	Finder 2C/O 8A 24V, #234508	Relay, Lowpressure	Circuit Diagrams IEC	2	2
K4	Finder 2C/O 8A 24V, #234508	Relay	Circuit Diagrams IEC	2	5
K5	Finder 2C/O 8A 24V, #234508	Relay, Inverteralarm	Circuit Diagrams IEC	2	3
K8	Finder 2C/O 8A 230V, #234506	Relay 2-way valve	Circuit Diagrams IEC	4	9
M6	Panasonic SRD132XDA21, #1074 (GE03)	Compressor	Circuit Diagrams IEC	1	6
M61	Panasonic SKD184XAA21, #1075 (GE06)	Compressor	Circuit Diagrams IEC	1	6
P3	DYK-BA046-DV5-4.5, 0 -> 46bar, #17630	Pressuretransmitter Heatpump HP	Circuit Diagrams IEC	2	11
P4	DYK-BA020-DV5-4.5, 0 -> 20bar, #17631	Pressuretransmitter Heatpump LP	Circuit Diagrams IEC	2	13
Print	#239935	Options PCB	Circuit Diagrams IEC	4	6
Q			Circuit Diagrams IEC	3	13
R3	100k, #2152225	resistance	Circuit Diagrams IEC	4	1
S1.1	Omskifter	Heating element	Circuit Diagrams IEC	2	11
S1.2	Omskifter	Circulationpump Load circuit	Circuit Diagrams IEC	2	12
T13	NTC-føler JM103C1R1, #239961	Brine forward flow, to heatpump	Circuit Diagrams IEC	3	4
T14	NTC-føler JM103C1R1, #239961	Brine return flow, from heatpump	Circuit Diagrams IEC	3	3
T16	NTC-føler JM103C1R1, #239961	Central heating before condenser	Circuit Diagrams IEC	3	4
T17	NTC-føler JM103C1R1, #239961	Central heating after condenser	Circuit Diagrams IEC	3	3
T18	NTC-føler JM103C1R1, #239961	Central heating after suppl.	Circuit Diagrams IEC	3	3
T20	NTC-føler JM103C1R1, #239961	Outdoor temperature	Circuit Diagrams IEC	3	4



GE03 / GE06
 Jordvarmepumpe m/CTS602 Styring
 Partnr. 74002313 & XX, 74002613 & XX

Project		74002x13 CTS602 V1-18 250509		Total pages	2
Date	14-10-2024	Country	GB	Next page	2
				Page	1

